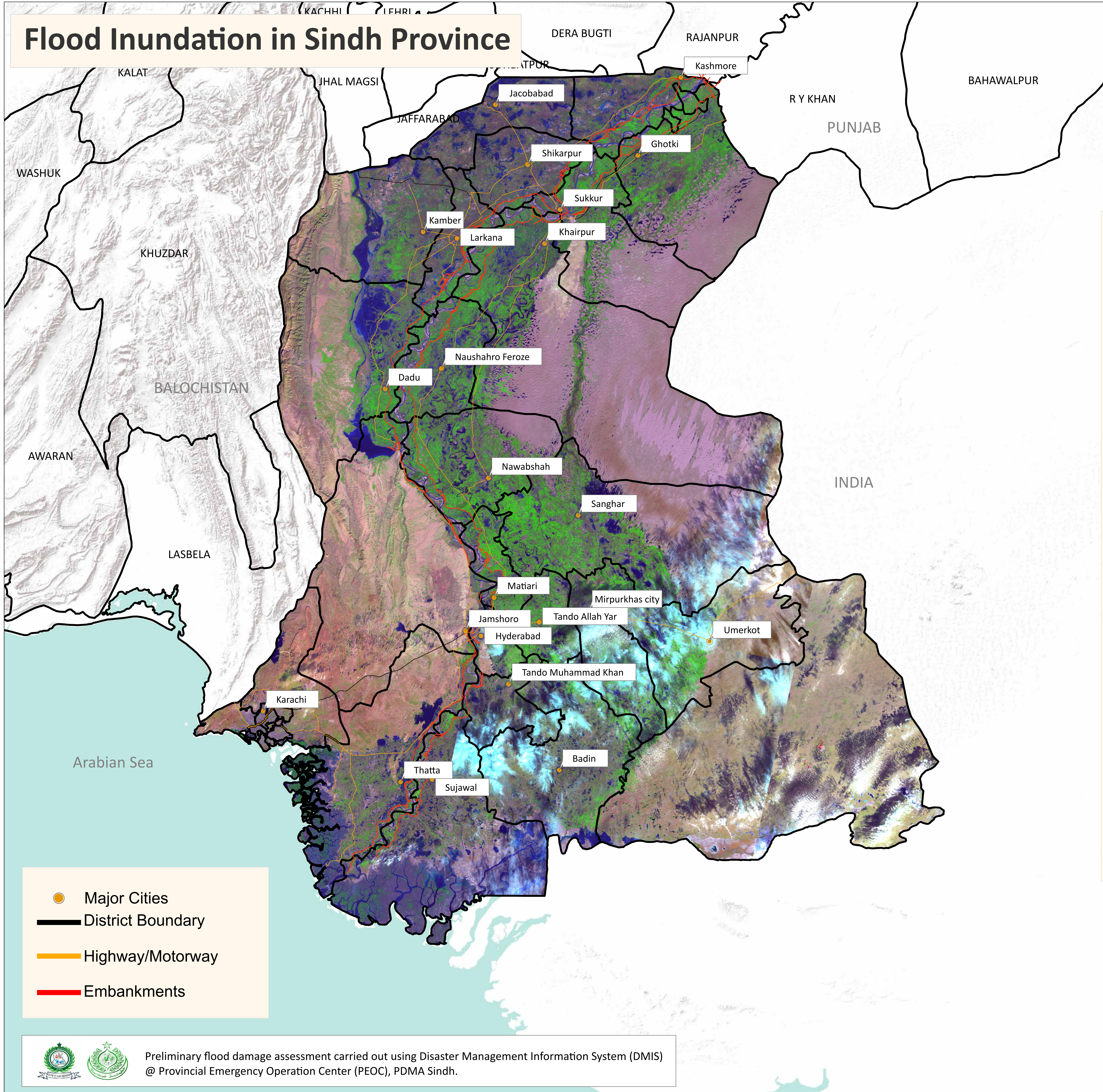


# Flood Inundation in Sindh Province



S.no	District	Total Area in Sq.Km	Natural Water Bodies in Sq.Km	Previous Inundation in Sq.Km (25/11/2022)	Current Inundation in Sq.Km (18/12/2022)
1	Kashmore	2,549.03	298.81	351.48	330.8
2	Jacobabad	2,769.36	75.45	615.31	519.18
3	Shikarpur	2,576.89	113.86	370.46	338.36
4	Larkana	1,906.34	112.79	201.43	179.2
5	Kamber Shahdadkot	5,596.44	35.21	729.19	532.56
6	Dadu	8,032	142.88	992.57	789.7
7	Naushahro Feroze	3,025.48	140.23	353.98	350.08
8	SBA	4,615.16	144.36	335.24	322.76
9	Sanghar	10,259.02	215.41	610.25	603.78
10	Jamshoro	11,250.32	258.81	344.06	320.44
11	Hyderabad	1,021.54	27.87	72.33	56.86
12	Matiari	1,458.04	52.82	105.58	92.47
13	Tando Allah Yar	1,572.86	9.40	84.31	77.27
14	TMK	1,813	55.36	96.21	89.32
15	Badin	6,470	249.81	433.57	358.24
16	Sujawal	8,699.20	1,052.73	2,025.14	1763.92
17	Thatta	7,704	854.57	1,458.07	872.55
18	Sukkur	5,212.05	160.98	195.46	189.02
19	Khairpur	15,925.04	172.85	545.13	549.17
20	Ghotki	6,506.18	124.16	206.79	211.06
21	Mirpurkhas	3,319.16	16.91	116.41	72.4
22	Umerkot	5,502.92	2.32	182.07	69.38
<b>Total</b>		<b>117,784.49</b>	<b>4,317.59</b>	<b>10,425.04</b>	<b>8,688.52</b>

**Disclaimer:** 15m resolution satellite Images has been used for preliminary damage assessment and depicts status of flood inundation as of image acquisition date.

**Source:** Landsat 9 Collection 2, 18 December 2022 05: 56 GMT

- Major Cities
- District Boundary
- Highway/Motorway
- Embankments

